



Client: Ensko – DS7

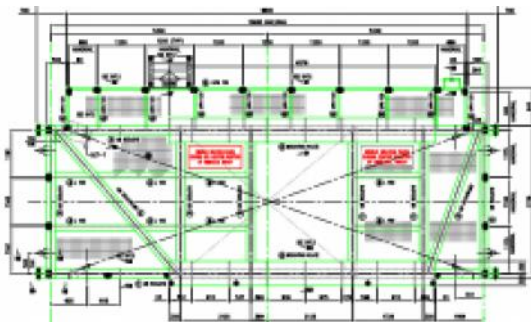
Project Brief:

- ▶ Project: Post delivery Scopes
- ▶ Location: Samsung Shipyard in South Korea – transit to Angola
- ▶ Duration: 3 Deployments – approximately 6 weeks each
- ▶ Team: 1 x Project Manager, 1 x Project Engineer, 1 x Supervisor, 1 x Team Leader, 11 x Structural/Pipe Fitters, 11 x Welders, 1 x NDT Inspector, 4 x Scaffolders, 6 x Fire Watchers, 2 x Painters, 2 x Electrical Supervisor, 4 x Electricians, 9 x Electrical Assistants



Supply

- ▶ Prefabrication done in Dubai, Cape Town, and Walvis Bay
- ▶ Prefabricated structures/piping shipped to South Korea, Singapore, Namibia and Angola
- ▶ Tools and Scaffolding supplied in DNV 2.7-1 container
- ▶ Gas cylinders supplied in DNV 2.7-1 racks



For more details please contact: info@3cmetalme.com



Scope of Work

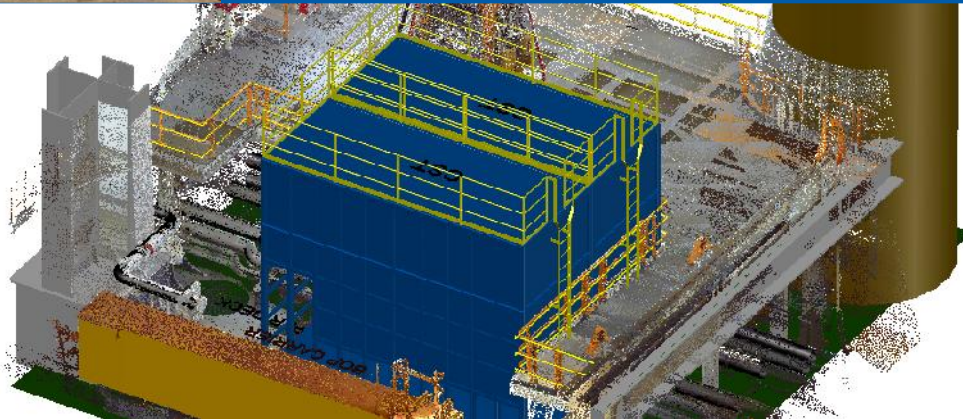
- ▶ Detailed survey in Shipyard and in Singapore including Laser Scanning
- ▶ Engineering including ABS review
- ▶ Prefabrication under supervision of an ABS surveyor.
- ▶ Installation onboard during
- ▶ Installation Man Hours in 2013: 35,412

Onsite Installation

- ▶ HP Piping (up to 15,000 PSI rated): Cement Test Line (from Cement Unit to Drill Floor), Coil Tubing line (from Cement Unit to Pipe Deck), Swagelok tubing (6,900 PSI rated)
- ▶ LP Piping: Mud Sieving system, Foam Firefighting in the Shaker Room, 3rd Party utilities (Air and Water supply lines), Potable Water line in Stainless Steel



- ▶ Structural scopes: 3 x Removable structures, 20 m3 Diesel Tank in Sack Store, 3 x Removable Spooler Bridges AFT Drill Floor, XT Reeler Frame on the Xmas Tree Carrier, Hose Hangers and Crossovers, Clamped Padeyes on the mast
- ▶ Electrical scopes: 3rd Party (Distribution Panel in Switchboard Room), CCTV system, Telephones, Load Cell indicator, Equipment connection
- ▶ Thermal insulation and Ducting Line installation for AC unit
- ▶ Zero Discharge system installation for TWMA Equipment (Engineering, Skids for equipment, Piping and Electrical)



For more details please contact: info@3cmetalme.com