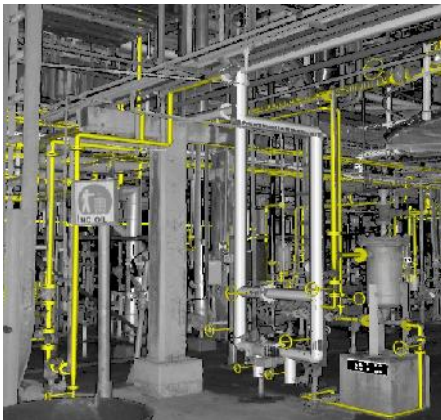




## Client: Chevron Refinery

### Project Brief

- ▶ Project: 2015 Shutdown – Replacement of Amine Lines
- ▶ Location: Cape Town, South Africa
- ▶ Duration: 10 Weeks Prefabrication  
12 Weeks Installation
- ▶ Team: 1 x Project Engineer, 1 x Superintendent, 3 x Supervisors,  
5 x Team Leaders, 5 x QC Inspectors, Material Controller,  
Storeman, Safety Officer, 80 pax Tradesmen including:  
Mechanical Fitters, Pipe Fitters, Pipe Welders, Riggers,  
Safety Watchers



### Scope of Work

- ▶ Site survey completed to verify and supplement ISO drawings
- ▶ Thorough preparation and planning done on site prior to shutdown
- ▶ Pre-fabrication of Amine spools completed in 3CMetal SA workshop including PWHT, NDT, Pressure testing and Painting
- ▶ Complete installation of all lines, valves and fittings on site during shutdown period
- ▶ Carbon Steel lines ranged from ½" up to 8"
- ▶ Stainless Steel lines ranged from ¾" up to 14"
- ▶ Completion of QC packs for prefabrication and installation phases

### Onsite Installation

- ▶ Destructing of existing lines
- ▶ Moving and rigging of new lines into position
- ▶ Fitting and welding of new lines
- ▶ PWHT on 100% carbon steel welds
- ▶ NDT as per requirements
- ▶ Pressure testing
- ▶ Final bolt-up and mechanical completion in accordance with our flange management procedure



For more details please contact: [info@3cmetalme.com](mailto:info@3cmetalme.com)