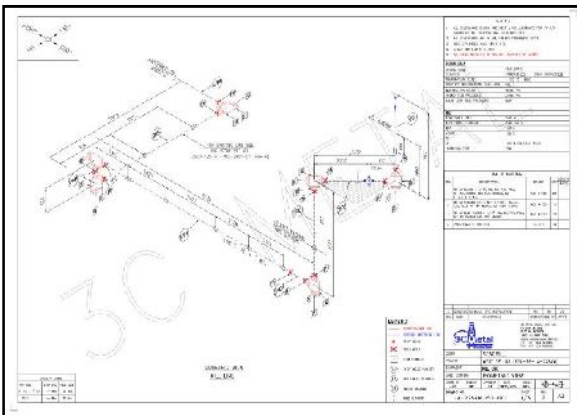




Client: Managed Pressure Drilling System – Seadrill West Tellus

Project Brief

- ▶ **Project:** MPD Package Installation, Well Test, Deluge System & Various.
- ▶ **Location:** Dock Side Las Palmas, Spain then Transit to Brazil.
- ▶ **Duration:** 109 days on-board.
4611 Man Days (55,332 Man Hours).
- ▶ **Team:** Up to 82 Pax: Project Engineer, Supervisors, Team Leaders, Qualified Welders, Fitters, PWHT Technicians, Electricians, Abseilers, Pressure Test Specialists, NDT Technicians, Scaffolders, Painters.



Engineering

- ▶ Onsite survey at SHI Shipyard – South Korea
- ▶ Technical expertise provided for Piping and Structure
- ▶ Complex Flexibility Analysis on New HP Piping scopes
- ▶ Changing Pressure Classification of Flow Line to 450 PSI WP
- ▶ Single Line Drawings & 3D pipe modelling for various projects
- ▶ Complete As-built package

Supply

- ▶ **Worldwide Sourcing:**
 - ▶ LP & HP Supply from France, Dubai & U.K.
 - ▶ Hydraulic & Air lines tubing / couplings from France.
 - ▶ Tools and Equipment from France.
- ▶ Scaffolding supplied in DNV 2.7-1 container from France.
- ▶ 4x DNV 2.7-1 Gas racks & Gas (Oxygen, Acetylene, Argon) from France.
- ▶ Post Weld Heat Treatment equipment from France.
- ▶ Pressure Test pump and related equipment from France.



For more details please contact: info@3cmetalme.com



Logistics

- ▶ Personnel Deployment, Logistics & co-ordination for:
 - ▶ Las Palmas, Spain
 - ▶ Rio De Janeiro, Brazil
- ▶ Total of 44 air freighted Boxes of HP fittings to Las Palmas, Spain.
- ▶ Total of 62MT of HP material air freighted for project.
- ▶ Certification of team: Seamen’s Book, Yellow Fever, BOSIET / HUET.

MPD Scopes of Work

- ▶ 11 x Individual HP Lines for MPD rig Integration.
- ▶ 9 x Individual LP Lines for MPD rig Integration.
- ▶ Interconnecting HP PRV Discharge Line for Buffer Manifold.
- ▶ Structural: Installation of 3x Gooseneck Supports for Coflex Hoses to Subsea MPD Equipment, MPD Equipment rigging & Sea-fastening.
- ▶ Hydraulic Tubing for Interconnection of MPD Equipment.
- ▶ 2 x Vent Lines from Drill Floor to Derrick for MGS (12” & 6”)



Other Scopes of Work

- ▶ 6 x LP & HP Well Test Lines for New Burner Boom Installation
- ▶ Installation of Structures & LP Piping for Cuttings Dryer System
- ▶ 4 x HP (15,000 PSI) Cement Lines to Drill Floor & Pipe Deck
- ▶ 4 x HP (10,000 PSI) PRV Lines from Mud Pumps to Pits
- ▶ HP (10,000 PSI) Booster Line Crossover
- ▶ Choke & Kill Modification to API 6A Studded Blocks
- ▶ Deluge System LP piping AFT of Vessel
- ▶ HP Booster Line

Class Interface

- ▶ ABS Certification of all relevant technical documentation and calculation notes.
- ▶ ABS Inspection / Witness during pre-fabrication.
- ▶ ABS Inspection / Witness for Pressure Tests on HP Lines.



For more details please contact: info@3cmetalme.com