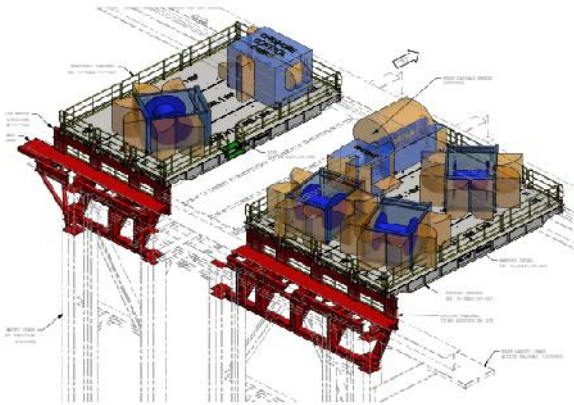




**Client: ENSCO DS8**

## Project Brief

- ▶ **Project:** Angola, KAOMBO TOTAL Upgrades
- ▶ **Location:** Transit between Singapore and Angola, and Offshore Angola.
- ▶ **Duration:** 200 days onboard, up to Mid February 2016.  
6,168 Mandays (74,016 Manhours).
- ▶ **Team:** Up to 56 Pax: Project Engineer, Supervisors, Qualified Welders, Fitters, Electricians, Rope Access team, NDT Technicians, Scaffolders, Painters, Firewatchers.
- ▶ **Safety:** Project without any recorded LTI's.



## Engineering

- ▶ Onsite 3D Laser Scanning survey at SHI Shipyard – South Korea.
- ▶ Technical expertise provided for Piping and Structure.
- ▶ 3D modelling for structures.
- ▶ Design of 7x Removable Spooler Bridges AFT Drill Floor.
- ▶ Structural/Piping Design of the Zero Discharge Installation.
- ▶ Structural Design of the Well Test Equipment Installation.
- ▶ Design of Coriolis Bypass Line.
- ▶ Design of Choke & Kill Manifold Blast Wall.

## Supply

- ▶ Worldwide Sourcing & Prefabrication:
  - ▶ LP/HP Piping from Malaysia and Dubai.
  - ▶ Prefabricated structures from Malaysia, Dubai, South Africa, Namibia.
  - ▶ Electrical cables and material from Singapore and South Africa.
- ▶ Fully equipped 20ft Tool container.
- ▶ Scaffolding supplied in DNV 2.7-1 20ft container.
- ▶ 8 x DNV 2.7-1 Gas racks & Gas (Oxygen, Acetylene, Argon).



For more details please contact: [info@3cmetalme.com](mailto:info@3cmetalme.com)

FRANCE - Sauvelade  
T: +33 55 96 76 467  
E: [office@3cmetal.com](mailto:office@3cmetal.com)

SOUTH AFRICA – Cape Town  
T: +27 21 94 96 346  
E: [office@3cmetalsa.com](mailto:office@3cmetalsa.com)

UNITED ARAB EMIRATES - Dubai  
T: +971 48 83 06 82  
E: [office@3cmetalme.com](mailto:office@3cmetalme.com)

MALAYSIA – Johor Bahru  
T: +60 73 51 30 40  
E: [office@3cmetalasia.com](mailto:office@3cmetalasia.com)

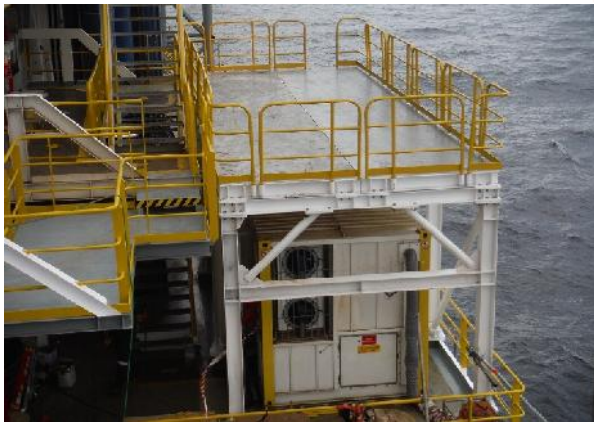


## Logistics

- ▶ Personnel Deployment in Keppel Fells Shipyard (Singapore).
- ▶ Project Management and Full Logistics Coordination in Singapore & Namibia.
- ▶ Coordination for personnel and material during transit between Singapore and Angola.
- ▶ More than 100 tons of structures and material sent offshore from Malaysia, Dubai, South Africa and Namibia.

## Zero Discharge Scopes of Work

- ▶ Supply, Prefabrication and Installation:
  - ▶ TCC Module, HCB Tanks Skid Platforms
  - ▶ Workshop/Lab Container Skid Platforms.
  - ▶ Piping Integration between the units.
- ▶ Electrical:
  - ▶ Connection of all Halliburton Zero Discharge Equipment.

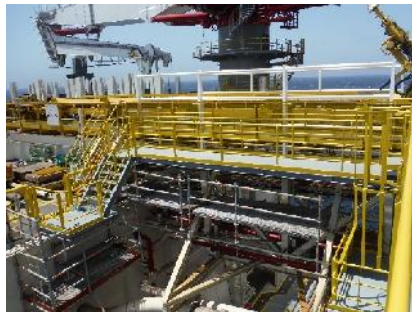


## Other Scopes of Work

- ▶ Prefabrication and Installation of 15K PSI Test Line
  - ▶ (5.5" OD x 1.25" thick).
- ▶ Prefabrication and Installation of 15K PSI Coil Tubing Line
  - ▶ (3.5" OD x 3/4" thick).
- ▶ Prefabrication and Installation of MLU/MWD Mezzanine.
- ▶ Well Test Area reinforcement & Well Test Equipment installation.
- ▶ Cutting Dryer System integration.
- ▶ Mousehole 5° inclined towards AFT.
- ▶ Mud sieving.
- ▶ Walkway from Pipe Deck to Drill Floor.

## Class Interface

- ▶ ABS Certification of all drawings and calculation notes.
- ▶ ABS Inspection / Witness during pre-fabrication.



For more details please contact: [info@3cmetalme.com](mailto:info@3cmetalme.com)